

Guidelines of Implementation

EDIFACT SUBSET

EDITEC

SLSRPT



SLSRPT

Version 4.1

Table of contents

Introduction.....	3
Message structure.....	4
Message structure diagram	5
Segment description	8

Introduction

This EDIFACT subset "Sales Report" has been prepared by ITEK GmbH on behalf of the Arbeitsgemeinschaft Neue Medien der deutschen Sanitärindustrie e.V. and the Deutscher Großhandelsverband Haustechnik e.V.

ITEK Service & Consulting GmbH
Technologiepark 8
33100 Paderborn
Germany

Phone no.: +49 52 51 16 14 0
Fax no.: +49 52 51 16 14 99
E-mail: info@itek.de

The EDIFACT subset is based on the EDIFACT syntax version 3 and the following public documents:

- EDIFACT – Standardised message type "SLSRPT"
- UN/EDIFACT Directory 07B, UN/ECE/TRADE/WP.4
- EDIFACT – Service Segments Application Guidelines, Draft DIN 16560 - Part 1, February 1994
- UN/EDIFACT code list D.07B

Message structure

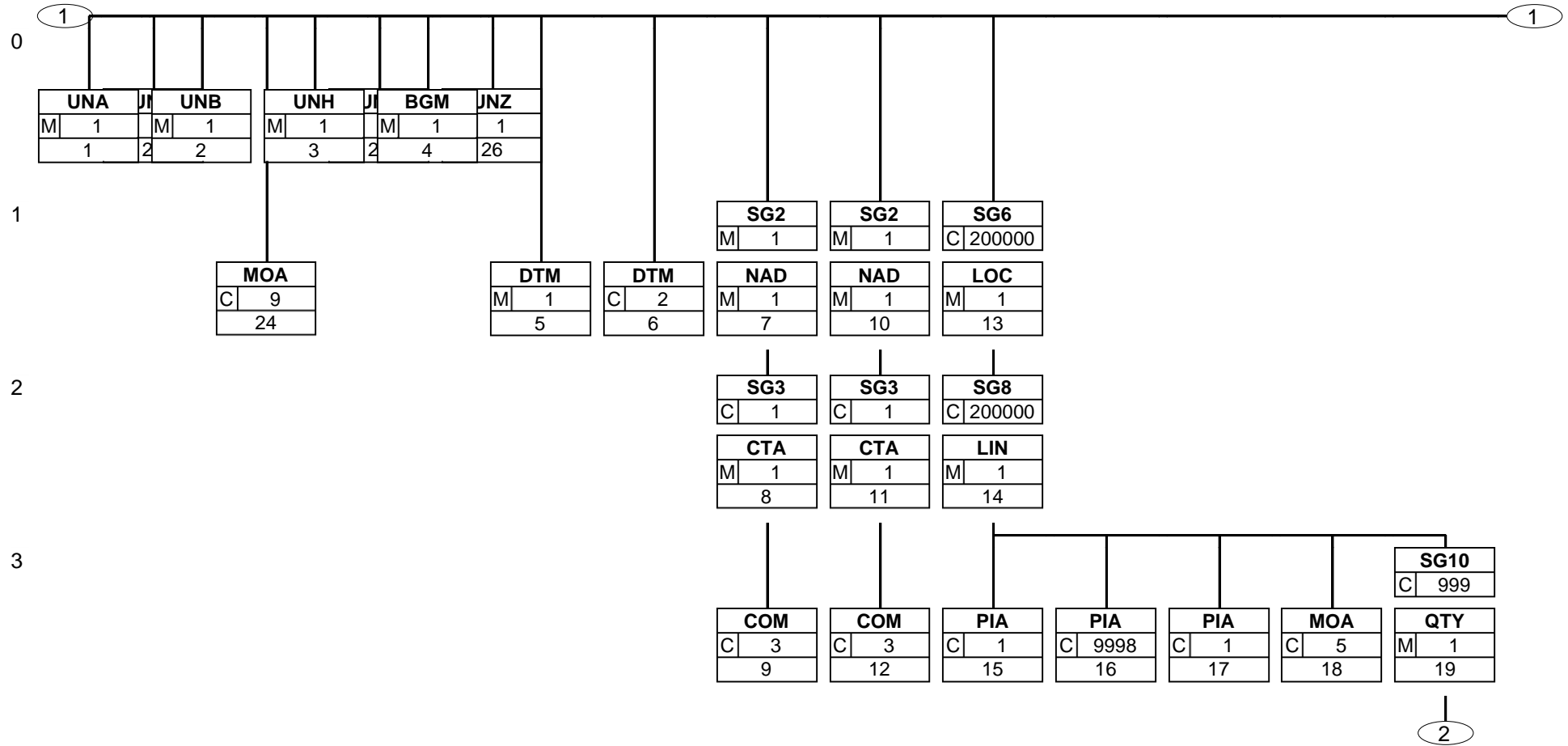
UNA	1	M	1	- Separator default
UNB	2	M	1	- User data head segment
UNH	3	M	1	- Message header
BGM	4	M	1	- Beginning of message
DTM	5	M	1	- Date of message
DTM	6	C	2	- Date/time/period data
SG2		M	1	- Supplier/manufacturer
NAD	7	M	1	- Name and address
SG3		C	1	- CTA-COM
CTA	8	M	1	- Communication partner
COM	9	C	3	- Communication link
SG2		M	1	- Wholesaler
NAD	10	M	1	- Name and address
SG3		C	1	- CTA-COM
CTA	11	M	1	- Communication partner
COM	12	C	3	- Communication link
SG6		C	200000	- LOC-SG8
LOC	13	M	1	- Location information
SG8		C	200000	- LIN-PIA-PIA-PIA-MOA-SG10
LIN	14	M	1	- Line item data
PIA	15	C	1	- Wholesaler's article number/GTIN
PIA	16	C	9998	- Batch number/serial number
PIA	17	C	1	- Commodity group
MOA	18	C	5	- Turnover and sales figures
SG10		C	999	- QTY-NAD-DTM-RFF
QTY	19	M	1	- Quantity
NAD	20	C	1	- Name and address
DTM	21	C	2	- Date/time/period data
RFF	22	C	2	- Reference
UNS	23	M	1	- Section control segment
MOA	24	C	9	- Monetary amount
UNT	25	M	1	- Message end segment
UNZ	26	M	1	- User data end segment

St =Status

EDIFACT: M=Mandatory, C=Conditional

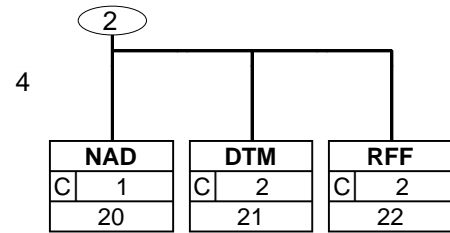
Application: R=Required, O=Optional, D=Dependent, A=Advised, N=Not used, X=Not used

Message structure diagram



Status: M=Mandatory, C=Conditional, R=Required, O=Optional, D=Dependent, A=Advised, N=Not used, X=Not used

Message structure diagram



SLSRPT

Message structure diagram

Status: M=Mandatory, C=Conditional, R=Required, O=Optional, D=Dependent, A=Advised, N=Not used, X=Not used

SLSRPT; 4.1

SLSRPT / UN D.07B S3

Issued: 15 Nov 2019

Printed: 18 Sep 2019
Page: 7 / 33

Segment description

Number	No	Segment	St	Max rep.	Level	Name
--------	----	---------	----	----------	-------	------

0000	1	UNA	M	1	0	Separator default
------	---	------------	---	---	---	-------------------

Tag	Name	St Format	Use/annotations
UNA			
UNA1	: separator	M an1	Separates data elements in a data element group : constant
UNA2	+ separator	M an1	Separates segment designations, data element groups and data elements + constant
UNA3	, decimal marker (comma)	M an1	, constant
UNA4	? release indicator	M an1	Restores the original meaning of the mark that follows the release indicator ? constant
UNA5	blank space	M an1	Reserved for later applications
UNA6	' segment terminator	M an1	' constant

Description: In the UNA segment, separators, decimal marks, and release indicators are predefined. These marks are defined only once and apply to the following messages until they are revoked. Consequently, they will not be transferred furthermore.

Example: UNA:+,?'

Segment description

Number	No.	Segment	St	Max rep.	Level	Name
0000	2	UNB	M	1	0	User data head segment

Tag	Name	St	Format	Use/annotations
UNB				
S001	SYNTAX -DESIGNATOR	M		
0001	Syntax identification	M	a4	Constant value: UNOC EDIFACT syntax character set C
0002	Syntax version number	M	n1	Constant value: 3 EDIFACT syntax version 3
S002	SENDER OF THE INTERCHANGE FILE	M		
0004	Sender designation	M	an..35	Identifier of the sender (e. g. identification number in the Telebox400)
0007	Participant designation, qualifier	M	an..4	This data element serves for the definite specification of the participants. The following codes are available: 65 sender Telebox400 user ZZZ sender (other network operators) 14 sender GLN SHK SHK mail
S003	RECIPIENT OF THE INTERCHANGE FILE	M		
0010	Recipient designation	M	an..35	Identifier of the recipient (e. g. identification number in the Telebox400)
0007	Participant designation, qualifier	M	an..4	This data element serves for the definite specification of the participants. The following codes are available: 65 recipient Telebox400 user ZZZ recipient (other network operators) 14 recipient GLN SHK SHK mail
S004	DATE/TIME OF CREATION	M		
0017	Date of creation	M	n6	Date of the creation of the message on the side of the sender in YYMMDD format (this format is prescribed by the EDIFACT application guideline for service segments).
0019	Time of creation	M	n4	Format: HHMM
0020	DATA EXCHANGE REFERENCE	M	an..14	Number for each communication address (X.400, Provider, ...) and message type, rising in ascending order. The data exchange reference number serves as a plausibility test for the identification of double transfers and failed transfers. This task is being fulfilled by the converter.
S005		N		
0022		N		Not used in the subset.
0026		N		Not used in the subset.
0029		N		Not used in the subset.
0031		N		Not used in the subset.
0032		N		Not used in the subset.
0035	Test indicator	C	n1	Test indicator

Description: In the UNB segment, specifications re syntax, sender/recipient of the transfer file, the date and time of its creation, and a data transfer reference are transferred.

Example: UNB+UNOC:3+4012345000009:14+4012345000010:14+131024:0913+1+++++1'

Segment description

Number	No	Segment	St	Max rep.	Level	Name
0010	3	UNH	M	1	0	Message head segment

Tag	Name	St	Format	Use/annotations
UNH				
0062	MESSAGE REFERENCE NUMBER	M	an..14	In each transfer file, every message is consistently numbered in ascending order, beginning with "1". This task is being fulfilled by the converter.
S009	MESSAGE IDENTIFICATION	M		
0065	Message type identification	M	an..6	Constant value: SLSRPT Sales Report
0052	Version number of the message type	M	an..3	Constant value: D Draft Directory
0054	Release number of the message type	M	an..3	Constant value: 07B UN/EDIFACT Draft Directory D.07B
0051	Administrative organization, coded	M	an..2	Constant value: UN United Nations UN/ECE/TRADE/WP.4
0057	Application code of the competent organization	M	an..6	Constant value: ITEK41 Version 4.1

Description: In the UNH segment, a message is identified unambiguously. The EDITEC Subset "Sales Report" is based on the message type "SLSRPT".

Example: UNH+1+SLSRPT:D:07B:UN:ITEK41'

Segment description

Number	No	Segment	St	Max rep.	Level	Name
0020	4	BGM	M	1	0	Beginning of message

Tag	Name	St	Format	Use/annotations
BGM				
C002	DOCUMENT/MESSAGE NAME	M		
1001	Document/message name, coded	M	an..3	The following codes are available: 73A Sales Report Article Sets 73E Sales Report (GS1 code)
1131		N		Not used in the subset.
3055		N		Not used in the subset.
1004	Document/message name	M	an..35	Denomination of the Sales Report
C106	DOCUMENT/ MESSAGE IDENTIFICATION	M		
1004	Document/message number	M	an..35	Number of the document, assigned by the sender.
1225	Document type, coded	M	an..3	The following codes are available: 2 Amendment 5 Replacement 9 Original

Description: In the BGM segment, the purpose, name and number of the message are defined.

Example: BGM+73A:::Denomination of the Sales Report+1+2'

Segment description

Number	No	Segment	St	Max rep.	Level	Name
0030	5	DTM	M	1	1	Date/time of the document

Tag	Name	St	Format	Use/annotations
DTM				
C507	DATE/TIME/PERIOD SPECIFICATIONS	M		
2005	Date/time/period specifications, qualifier	M	an..3	The following codes are available: 137 document/message date
2380	Date/time/period specifications	C	an..35	Date, formatted as defined in data element 2379.
2379	Date/time/period specifications, format, qualifier	C	an..3	The following codes are available: 102 Format: YYYYMMDD

Description: In the DTM segment the date of the Sales Report has to be transferred.

Example: DTM+137:20141015:102'

Segment description

Number	No	Segment	St	Max rep.	Level	Name
0030	6	DTM	C	2	1	Date/time/period data

Tag	Name	St	Format	Use/annotations
DTM				
C507	DATE/TIME/PERIOD SPECIFICATIONS	M		
2005	Date/time/period specifications, qualifier	M	an..3	The following codes are available: 90 Beginning of the reporting period 91 End of the reporting period
2380	Date/time/period specifications	C	an..35	Date, formatted as defined in data element 2379.
2379	Date/time/period specifications, format, qualifier	C	an..3	The following codes are available: 102 Format: YYYYMMDD

Description: Further data may be transferred in addition.

Example: DTM+90:20141001:102'

Segment description

Number	No	Segment	St	Max rep.	Level	Name
0080		SG2	M	1	1	Manufacturer/supplier
This segment group encompasses the NAD segment as well as segment group 3. It serves for the indication of the partners and their contact persons.						
0090	7	NAD	M	1	1	Name and address

Tag	Name	St	Format	Use/annotations
NAD				
3035	PARTNER, QUALIFIER	M	an..3	The following codes are available: SU Manufacturer/supplier (industry)
C082	IDENTIFICATION OF THE PARTNER	M		
3039	Partner identification number, coded	M	an..35	In relation to the qualifier stated above, the identification number of the partner will be provided here.
1131		N		Not used in the subset.
3055	Administrative organization, coded	M	an..3	The following codes are available: 9 GLN (GS1 as the German issuer of the GLN numbers) ZZZ bilaterally agreed upon (customer- and supplier numbers)
C058		N		
3124		N		Not used in the subset.
C080	NAME OF THE PARTNER	C		
3036	Name 1 of the partner	M	an..35	Name 1 of the partner.
3036	Name 2 of the partner	C	an..35	Name 2 of the partner.
3036	Name 3 of the partner	C	an..35	Name 3 of the partner.
C059	STREET	C		
3042	Street and house number	M	an..35	Building name/number and street name
3164	PLACE	C	an..35	
C819		N		
3229		N		Not used in the subset.
3251	POSTAL CODE/ZIP CODE	C	an..17	
3207	COUNTRY, CODED	C	an..3	The most important country codes according to ISO 3166 (the postal codes have to be given on the delivery note papers): BE Belgium BG Bulgaria DK Denmark DE Germany FI Finland FR France GR Greece GB Great Britain IE Ireland IT Italy CA Canada LU Luxembourg NL Netherlands NO Norway AT Austria PT Portugal SE Sweden CH Switzerland ES Spain TR Turkey US USA

Description: In the NAD segment, data for the identification of the parties involved as well as important address details are transferred.

Example: NAD+SU+401234500009::9++Joe:John:Sample+Any Street 16+Any City++12345+DE'

Segment description

Number	No	Segment	St	Max rep.	Level	Name
0100		SG3	C	1	2	CTA-COM
This segment group contains the CTA segment for the indication of the contact person and the COM segment for the indication of the communication link.						
0110	8	CTA	M	1	2	Communication partner

Tag	Name	St	Format	Use/annotations
CTA				
3139		N		Not used in the subset.
C056	DEPARTMENT OR EMPLOYEE DETAILS	M		
3413		N		Not used in the subset.
3412	Department or person responsible	M	an..256	Name of the department or person responsible

Description: In the CTA segment, the name of the person responsible for the transaction at hand, both at the sender's and the recipient's, can be transferred.

Example: CTA++:Joe Sample'

Segment description

Number	No	Segment	St	Max rep.	Level	Name
0100		SG3	C	1	2	CTA-COM
This segment group contains the CTA segment for the indication of the contact person and the COM segment for the indication of the communication link.						
0120	9	COM	C	3	3	Communication link

Tag	Name	St Format	Use/annotations
COM			
C076	COMMUNICATION LINK	M	
3148	Communication number	M an..512	
3155	Communication channel/service, qualifier	M an..3	The following codes are available: EM E-Mail FX Fax TE Telephone

Description: A segment for the indication of the communication number and -type of the person responsible or department referred to in the CTA segment.

Example: COM+joe_sample@e_mail.de:EM'

Segment description

Number	No	Segment	St	Max rep.	Level	Name
0080		SG2	M	1	1	Wholesaler
This segment group encompasses the NAD segment as well as segment group 3. It serves for the indication of the partners and their contact persons.						
0090	10	NAD	M	1	1	Name and address

Tag	Name	St	Format	Use/annotations
NAD				
3035	PARTNER, QUALIFIER	M	an..3	The following codes are available: WS Wholesaler
C082	IDENTIFICATION OF THE PARTNER	M		
3039	Partner identification number, coded	M	an..35	In relation to the qualifier stated above, the identification number of the partner will be provided here.
1131		N		Not used in the subset.
3055	Administrative organization, coded	M	an..3	The following codes are available: 9 GLN (GS1 as the German issuer of the GLN numbers) ZZZ bilaterally agreed upon (customer- and supplier numbers)
C058		N		
3124		N		Not used in the subset.
C080	NAME OF THE PARTNER	C		
3036	Name 1 of the partner	M	an..35	Name 1 of the partner.
3036	Name 2 of the partner	C	an..35	Name 2 of the partner.
3036	Name 3 of the partner	C	an..35	Name 3 of the partner.
C059	STREET	C		
3042	Street and house number	M	an..35	Building name/number and street name
3164	PLACE	C	an..35	
C819		N		
3229		N		Not used in the subset.
3251	POSTAL CODE/ZIP CODE	C	an..17	
3207	COUNTRY, CODED	C	an..3	The most important country codes according to ISO 3166 (the postal codes have to be given on the delivery note papers): BE Belgium BG Bulgaria DK Denmark DE Germany FI Finland FR France GR Greece GB Great Britain IE Ireland IT Italy CA Canada LU Luxembourg NL Netherlands NO Norway AT Austria PT Portugal SE Sweden CH Switzerland ES Spain TR Turkey US USA

Description: In the NAD segment, data for the identification of the parties involved as well as important address details are transferred.

Example: NAD+WS+4012345000010::9++Joe:John:Sample+Any Street 16+Any City++12345+DE'

Segment description

Number	No	Segment	St	Max rep.	Level	Name
0100		SG4	C	1	2	CTA-COM
This segment group contains the CTA segment for the indication of the contact person and the COM segment for the indication of the communication link.						
0100	11	CTA	M	1	2	Communication partner

Tag	Name	St	Format	Use/annotations
CTA				
3139		N		Not used in the subset.
C056	DEPARTMENT OR EMPLOYEE DETAILS	M		
3413		N		Not used in the subset.
3412	Department or person responsible	M	an..256	Name of the department or person responsible

Description: In the CTA segment, the name of the person responsible for the transaction at hand, both at the sender's and the recipient's, can be transferred.

Example: CTA++:Joe Sample'

Segment description

Number	No	Segment	St	Max rep.	Level	Name
0100		SG3	C	1	2	CTA-COM
This segment group contains the CTA segment for the indication of the contact person and the COM segment for the indication of the communication link.						
0120	12	COM	C	3	3	Communication link

Tag	Name	St	Format	Use/annotations
COM				
C076	COMMUNICATION LINK		M	
3148	Communication number		M an..512	
3155	Communication channel/service, qualifier		M an..3	The following codes are available: EM E-Mail FX Fax TE Telephone

Description: A segment for the indication of the communication number and -type of the person responsible or department referred to in the CTA segment.

Example: COM+joe_sample@e_mail.de:EM'

Segment description

Number	No	Segment	St	Max rep.	Level	Name
0200		SG6	C	200000	1	LOC-SG8
0210	13	LOC	M	1	1	Location data

Tag	Name	St	Format	Use/annotations
LOC				
3227	LOCATION DATA, QUALIFIER	M	an..3	The following codes are available: 162 Point of sale
C517	LOCATION DATA	M		
3225	Location data	M	an..35	Indication of the point of sale. In any case, this indication corresponds to the wholesaler indicated in the NAD segment.
1131		N		Not used in the subset.
3055	Administrative organization, coded	M	an..3	The following codes are available: 9 GS1 ZZZ bilaterally agreed upon
3224	Location data	C	an..256	

Description: In the LOC segment, the point of sale has to be transferred.

Example: LOC+162+Any City::ZZZ:Any City'

Segment description

Number	No	Segment	St	Max rep.	Level	Name
0270		SG8	C	200000	2	LIN-PIA-MOA-SG10
0280	14	LIN	M	1	2	Line item data

Tag	Name	St Format	Use/annotations
LIN			
1082	LINE ITEM NUMBER	M n..6	Unambiguous line item number
1229		N	Not used in the subset.
C212	PRODUCT IDENTIFICATION	M	
7140	Goods/service number	M an..35	Item number issued by supplier
7143	Goods/service number type, coded	M an..3	The following codes are available: MF Manufacturer's article number BP Article number assigned by wholesaler EN GTIN SG Product group

Description: In the LIN segment the article number of the sold article/article set is transferred following a current serial number.

Example: LIN+1++1:MF'

Segment description

Number	No	Segment	St	Max rep.	Level	Name
0270		SG8	C	200000	2	LIN-PIA-MOA-SG10
This segment group contains the segments LIN, PIA, QTY and DTM as well as segment groups 16 and 23, providing information re items despatched (line items).						
0290	15	PIA	C	1	3	Wholesaler's article number/GTIN

Tag	Name	St Format	Use/annotations
PIA			
4347	PRODUCT IDENTIFICATION FUNCTION, CODED	M an..3	Constant value: 1 additional identification
C212	PRODUCT IDENTIFICATION	M	
7140	Goods/service number	M an..35	Number pertaining to the product
7143	Goods/service number, coded	M an..3	BP Wholesaler's article number EN GTIN
C212	PRODUCT IDENTIFICATION	C	
7140	Goods/service number	M an..35	Number pertaining to the product
7143	Goods/service number, coded	M an..3	BP Wholesaler's article number EN GTIN

Example: PIA+1+1:BP+4012345000021:EN'

Segment description

Number	No	Segment	St	Max rep.	Level	Name
0270		SG8	C	200000	2	LIN-PIA-MOA-SG10
This segment group contains the segments LIN, PIA, QTY and DTM as well as segment groups 16 and 23, providing information re items despatched (line items).						
0290	16	PIA	C	9998	3	Batch number/serial number

Tag	Name	St	Format	Use/annotations
PIA				
4347	PRODUCT IDENTIFICATION FUNCTION, CODED	M	an..3	Constant value: 1 additional identification
C212	PRODUCT IDENTIFICATION	M		
7140	Goods/service number	M	an..35	Number pertaining to the product
7143	Goods/service number, coded	M	an..3	The following codes are available: NB batch number SN serial number
C212	PRODUCT IDENTIFICATION	C		
7140	Goods/service number	M	an..35	Number pertaining to the product
7143	Goods/service number, coded	M	an..3	The following codes are available: NB batch number SN serial number
C212	PRODUCT IDENTIFICATION	C		
7140	Goods/service number	M	an..35	Number pertaining to the product
7143	Goods/service number, coded	M	an..3	The following codes are available: NB batch number SN serial number
C212	PRODUCT IDENTIFICATION	C		
7140	Goods/service number	M	an..35	Number pertaining to the product
7143	Goods/service number, coded	M	an..3	The following codes are available: NB batch number SN serial number
C212	PRODUCT IDENTIFICATION	C		
7140	Goods/service number	M	an..35	Number pertaining to the product
7143	Goods/service number, coded	M	an..3	The following codes are available: NB batch number SN serial number

Example: PIA+1+1:NB+1:NB+1:NB+1:NB+1:NB'

Segment description

Number	No	Segment	St	Max rep.	Level	Name
0270		SG8	C	200000	2	LIN-PIA-MOA-SG10
This segment group contains the segments LIN, PIA, QTY and DTM as well as segment groups 16 and 23, providing information re items despatched (line items).						
0290	17	PIA	C	1	3	Commodity group

Tag	Name	St Format	Use/annotations
PIA			
4347	PRODUCT IDENTIFICATION FUNCTION, CODED	M an..3	Constant value: 1 additional identification
C212	PRODUCT IDENTIFICATION	M	
7140	Goods/service number	M an..35	Number pertaining to the product
7143	Goods/service number, coded	M an..3	The following codes are available: CG commodity group

Example: PIA+1+1:CG'

Segment description

Number	No	Segment	St	Max rep.	Level	Name
0270		SG8	C	200000	2	LIN-PIA-MOA-SG10
0360	18	MOA	C	5	3	Turnover- or sales figures

Tag	Name	St Format	Use/annotations
MOA			
C516	Monetary information	M	
5025		M an..3	38 turnover
			121 sales
5004	Numeric value	M n..35	

Example: MOA+38:9'

Segment description

Number	No	Segment	St	Max rep.	Level	Name
0420		SG15	C	9999	3	QTY-NAD-DTM-RFF
This segment group contains the segments LIN, PIA, QTY and DTM as well as segment groups 16 and 23, providing information re items despatched (line items).						
0430	19	QTY	M	1	3	Quantity

Tag	Name	St Format	Use/annotations
QTY			
C186	QUANTITY	M	
6063	Quantity, qualifier	M an..3	Constant value: 12 sales quantity
6060	Quantity	M n..35	Quantity with three decimal places max.
6411	Measurement unit, qualifier	C an..8	The following codes are available: CMK square centimetre CMQ cubic centimetre CMT centimetre DZN dozen GRM gram HLT hectolitre HUR hour KGM kilogramme KTM kilometre LTR litre MIN minute MMT millimetre MTK square metre MTQ cubic metre MTR metre PAK pack PCE piece PR pair RO number of rolls SET set TNE metric ton UI unit of work

Description: In the QTY segment the quantity delivered and the measurement unit are transferred.

Example: QTY+153:1:CMK'

Segment description

Number	No	Segment	St	Max rep.	Level	Name
0420		SG10	C	999	3	QTY-NAD-DTM-RFF
0450	20	NAD	C	1	4	Name and address

Tag	Name	St	Format	Use/annotations
NAD				
3035	PARTNER, QUALIFIER	M	an..3	The following codes are available: BY Buyer
C082	IDENTIFICATION OF THE PARTNER	C		
3039	Partner identification number, coded	M	an..35	In relation to the qualifier stated above, the identification number of the partner will be provided here.
C058		N		
3124		N		Not used in the subset.
C080	NAME OF THE PARTNER	C		
3036	Name 1 of the partner	M	an..35	Name 1 of the partner.
3036	Name 2 of the partner	C	an..35	Name 2 of the partner.
3036	Name 3 of the partner	C	an..35	Name 3 of the partner.
C059	STREET	C		
3042	Street and house number	M	an..35	Building name/number and street name
3164	PLACE	C	an..35	
C819		N		
3229		N		Not used in the subset.
3251	POSTAL CODE/ZIP CODE	C	an..17	
3207	COUNTRY, CODED	C	an..3	The most important country codes according to ISO 3166 (the postal codes have to be given on the delivery note papers): BE Belgium BG Bulgaria DK Denmark DE Germany FI Finland FR France GR Greece GB Great Britain IE Ireland IT Italy CA Canada LU Luxembourg NL Netherlands NO Norway AT Austria PT Portugal SE Sweden CH Switzerland ES Spain TR Turkey US USA

Description: In the NAD segment, data for the identification of the parties involved as well as important address details are transferred.

Example: NAD+BY+401234500009++Joe:John:Sample+Any Street 16+Any City++12345+DE'

Segment description

Number	No	Segment	St	Max rep.	Level	Name
0420		SG10	C	999	3	QTY-NAD-DTM-RFF
0470	21	DTM	C	2	4	Date/time/period specifications

Tag	Name	St	Format	Use/annotations
DTM				
C507	DATE/TIME/PERIOD SPECIFICATIONS	M		
2005	Date/time/period specifications, qualifier	M	an..3	Constant value: 22 delivery note date 149 invoice date
2380	Date/time/period specifications	C	an..35	Date, formatted as defined in data element 2379
2379	Date/time/period specifications, format, qualifier	C	an..3	The following codes are available: 102 YYYYMMDD 203 YYYYMMDDHHMM

Description: This segment is used for transferring the date specifications referring to the delivery note or invoice.

Example: DTM+22:20141015:102'

Segment description

Number	No	Segment	St	Max rep.	Level	Name
0420		SG10	C	999	3	QTY-NAD-DTM-RFF
0480	22	RFF	C	2	4	Reference data

Tag	Name	St Format	Use/annotations
RFF			
C506	REFERENCE DATA	M	
1153	Reference, qualifier	M an..3	The following codes are available: AAJ delivery note number AFL invoice number
1154	Reference number	C an..70	

Description: This segment is used for the indication of reference data.

Example: RFF+AAJ:1'

Segment description

Number	No	Segment	St	Max rep.	Level	Name
0690	23	UNS	M	1	0	Section control segment

Tag	Name	St Format	Use/annotations
UNS			
0081	SECTION IDENTIFIER, CODED	M a1	Constant value: S separation of line-item- and sum part

Description: The UNS segment is a service segment and marks the separation of line-item- and sum part.

Example: UNS+S'

Segment description

Number	No	Segment	St	Max rep.	Level	Name
0700	24	MOA	C	9	1	Monetary amount

Tag	Name	St Format	Use/annotations
MOA			
C516	Turnover- or sales figures total	M	
5025		M an..3	39 turnover
			122 sales
5004	Numeric value	M n..35	

Example: MOA+39:9'

Segment description

Number	No	Segment	St	Max rep.	Level	Name
0710	25	UNT	M	1	0	Message end segment

Tag	Name	St Format	Use/annotations
UNT			
0074	NUMBER OF SEGMENTS IN ONE MESSAGE	M n..6	Number of segments transferred in this message, incl. segments UNH and UNT.
0062	MESSAGE REFERENCE NUMBER	M an..14	The same reference number as in UNH/0062 has to be entered here. Upon receipt of message, this number will be compared with the entry in the UNH segment.

Description: In the UNT segment, the number of segments and a message reference number are transferred for a plausibility check.

Example: UNT+23+1'

Segment description

Number	No	Segment	St	Max rep.	Level	Name
0000	26	UNZ	M	1	0	User data end segment

Tag	Name	St Format	Use/annotations
UNZ			
0036	DATA EXCHANGE COUNTER	M n..6	Here the number of messages within the user data frame UNB...UNZ is entered.
0020	DATA EXCHANGE REFERENCE	M an..14	Here the same reference number as in UNB/0020 has to be entered. Upon receipt of the user data frame, this number is compared to the entry in the UNB segment.

Description: In the UNZ segment a data exchange counter and a data exchange reference can be transferred.

Example: UNZ+1+1'