

Implementation policy
to
EDIFACT-SUBSET
EDITEC
REMADV

REMADV
Version 4.2

Table of contents

Introduction.....	3
Message Struktur	4
Message Diagramm	5
Segments	7
Example	40

Introduction

This implementation guideline for the EDIFACT subset Remittance Advice was created by ITEK on behalf of the Working Group for New Media in the German Sanitary Industry (Arbeitsgemeinschaft Neue Medien der deutschen Sanitärindustrie e.V.) and the German Wholesale Association for Building Services (Deutscher Großhandelsverband Haustechnik e.V.).

ITEK
Technologiepark 20
33100 Paderborn

Telefon: (0 52 51) 16 14 -0
Telefax: (0 52 51) 16 14 -99
E-Mail: editec@itekmbh.de

The EDIFACT subset is based on EDIFACT syntax version 3 and the following public documents:

- EDIFACT – Uniform message type ‘DESADV’
- UN/EDIFACT Directory 96B, UN/ECE/TRADE/WP.4
- EDIFACT Application Guideline Service Segments, Draft DIN 16560 Part 1, February 1994
- UN/EDIFACT Code List D.97A

Paderborn, im September 2025

Message Structure

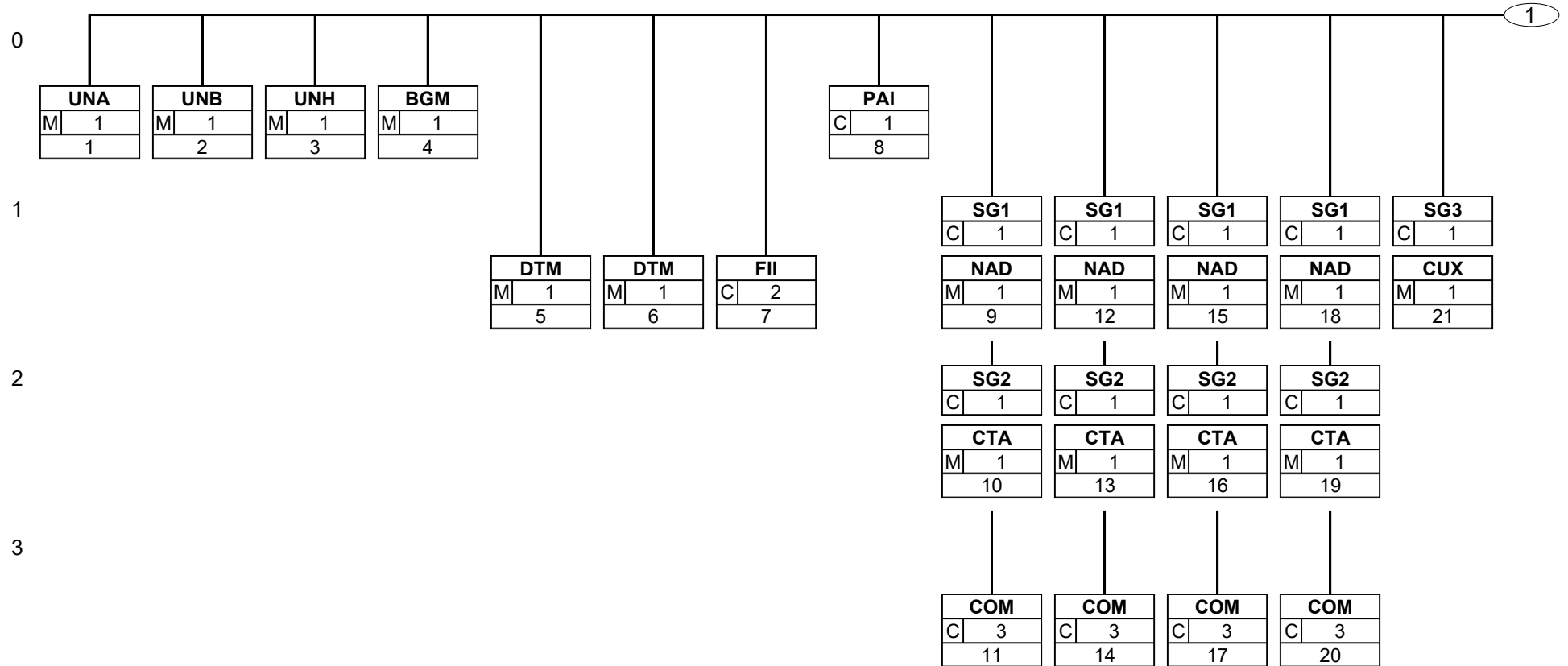
UNA	1	M	1	- Delimiter Specification
UNB	2	M	1	- User Data Header Segment
UNH	3	M	1	- Message Header Segment
BGM	4	M	1	- Start Of The Message
DTM	5	M	1	- Date/Time of Payment Advice
DTM	6	M	1	- Billing period
FII	7	C	2	- Financial institution
PAI	8	C	1	- Payment details
SG1		C	1	- Payee
NAD	9	M	1	- Name and Address
SG2		C	1	- CTA-COM
CTA	10	M	1	- Communication Partner
COM	11	C	3	- Communication link
SG1		C	1	- Payer
NAD	12	M	1	- Name and Address
SG2		C	1	- CTA-COM
CTA	13	M	1	- Communication Partner
COM	14	C	3	- Communication link
SG1		C	1	- Buyer
NAD	15	M	1	- Name and Address
SG2		C	1	- CTA-COM
CTA	16	M	1	- Trading Partner
COM	17	C	3	- Communication link
SG1		C	1	- Supplier
NAD	18	M	1	- Name and Address
SG2		C	1	- CTA-COM
CTA	19	M	1	- Communication Partner
COM	20	C	3	- Communication link
SG3		C	1	- CUX
CUX	21	M	1	- Currency Information
SG4		C	9999	- DOC-MOA-DTM-RFF-SG6
DOC	22	M	1	- Document/Message Details
MOA	23	M	4	- Monetary amount
DTM	24	C	1	- Date/Time/Period Details
RFF	25	C	5	- Reference Details
SG6		C	1	- AJT-MOA-RFF-FTX
AJT	26	M	1	- Indication of the reason for a change
MOA	27	C	1	- Monetary amount
RFF	28	C	1	- Reference Details
FTX	29	C	10	- Free Text
UNS	30	M	1	- Section Control Segment
MOA	31	M	1	- Monetary amount
UNT	32	M	1	- Message End Segment
UNZ	33	M	1	- Data Segment End

St = Status

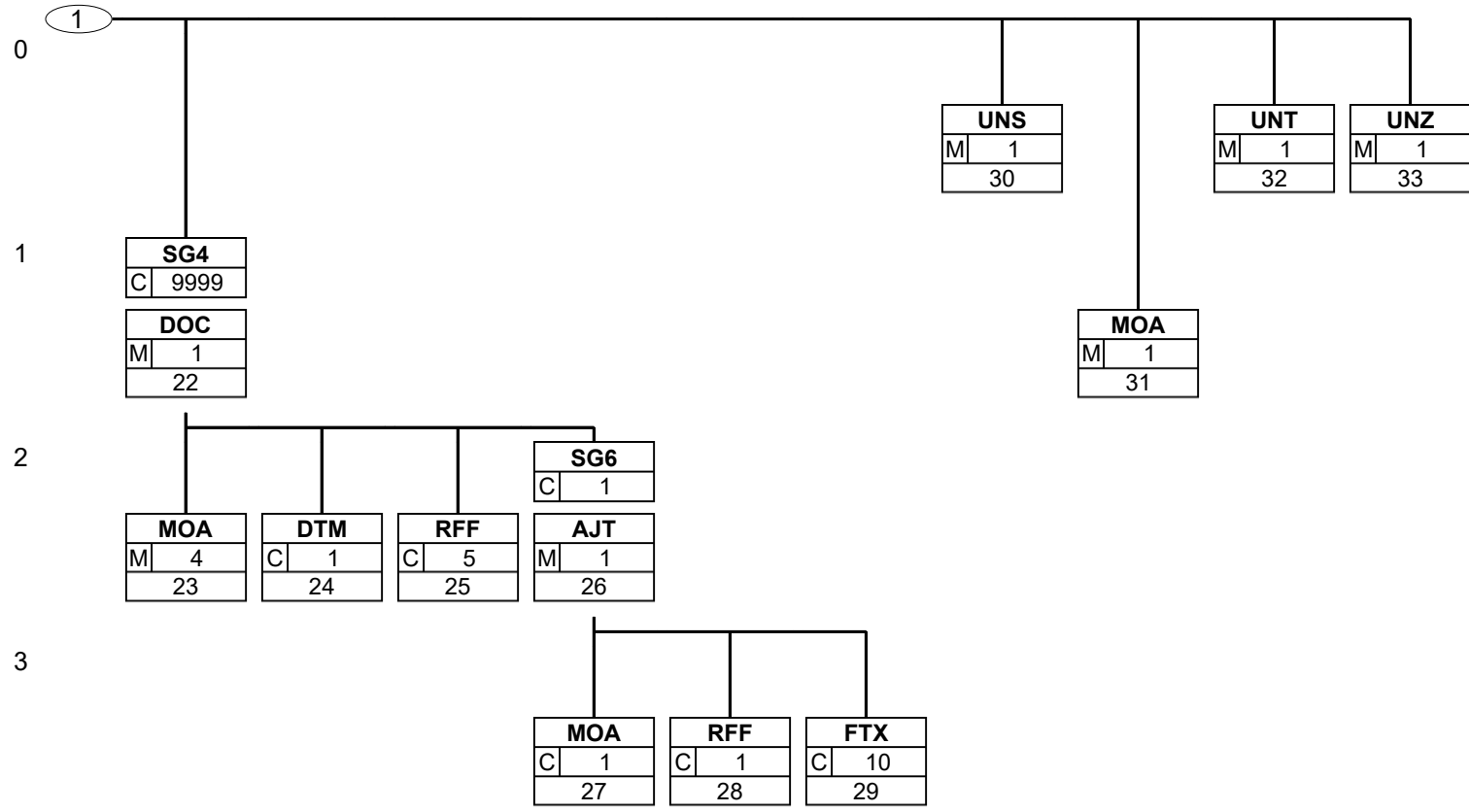
EDIFACT: M=Mandatory, C=Conditional

Application: R=Required, O=Optional, D=Dependent, A=Advised, N=Not used, X=Not used

Message Structure



Message Structure



Status: M=Mandatory, C=Conditional, R=Required, O=Optional, D=Dependent, A=Advised, N=Not used, X=Not used

Segment descriptions

Number	No	Segment	St	MaxRep.	Level	Name
--------	----	---------	----	---------	-------	------

0000	1	UNA	M	1	0	Delimiter Specification
------	---	------------	---	---	---	--------------------------------

Tag	Name	St	Format	Usage / Comments
UNA				
UNA1	: Separator	M	an1	Separates data elements within a data element group. : Constant
UNA2	#NAME?	M	an1	Separates segment identifiers, data element groups, and data elements. + Constant
UNA3	, Decimal mark (comma)	M	an1	, Constant
UNA4	? Release character	M	an1	Restores the original meaning to the character following the release character. ? Constant
UNA5	Spaces	M	an1	Reserved for future applications
UNA6	Segment terminator	M	an1	' Constant

Description: In the UNA segment, the separator, decimal, and release characters are defined. These characters are defined only once and apply to subsequent messages until further notice. Therefore, they are not transmitted again.

Example: UNA:+, ? '

No = Consecutive segment number
 MaxOcc = Maximum occurrence of the segment/group
 Counter = Counter of segment/group within the standard

St = Status
 EDIFACT: M=Mandatory, C=Conditional
 User specific: R=Required, O=Optional, D=Dependent,
 A=Advised, N=Not used

Segment descriptions

Number	No	Segment	St	MaxRep.	Level	Name
--------	----	---------	----	---------	-------	------

0000	2	UNB	M	1	0	User Data Header Segment
------	---	------------	---	---	---	--------------------------

Tag	Name	St	Format	Usage / Comments
UNB				
S001	Syntax Identifier	M		
0001	Syntax Identifier	M	a4	Constant value: UNOC EDIFACT-Syntax Ausgabe C
0002	Syntax version number	M	n1	Constant value: 3 EDIFACT-Syntax Version 3
S002	SENDER OF THE TRANSMISSION FILE	M		
0004	Sender Identification	M	an..35	Sender's identifier (e.g., identification number in Telebox400)
0007	Participant Identifier, Qualifier	M	an..4	This data element is used for the unique specification of the participants. The following codes are available: 14 Absender GLN 65 Absender Telebox400-Anwender SHK SHK-Mail ZZZ Absender (weitere Netzbetreiber)
S003	RECIPIENT OF THE TRANSMISSION FILE	M		
0010	Recipient designation	M	an..35	Recipient's identifier (e.g., identification number in Telebox400)
0007	Participant Identifier, Qualifier	M	an..4	This data element is used for the unique specification of the participants. The following codes are available: 14 Empfänger GLN 65 Empfänger Telebox400-Anwender SHK SHK-Mail ZZZ Empfänger (weitere Netzbetreiber)
S004	Date/Time of Creation	M		
0017	Date of creation	M	n6	Date of message creation at the sender in the format YYMMDD (This format is prescribed by the EDIFACT application guideline for service segments).
0019	Time of creation	M	n4	Format: HHMM
0020	DATA EXCHANGE REFERENCE	M	an..14	Continuously ascending number for each communication address (X.400, provider, etc.) and message type. The data exchange reference number is used for plausibility checks to identify duplicates and transmission errors. This task is performed by the converter.
S005		N		
0022		N		Not used in the subset.
0026		N		Not used in the subset.
0029		N		Not used in the subset.
0031		N		Not used in the subset.
0032		N		Not used in the subset.
0035	Test indicator	C	n1	Test indicator

Description: In the UNB segment, details regarding the syntax, the sender/recipient of the transmission file, the date/time of creation, and a data exchange reference are transmitted. Optionally, a recipient's password may also be included.

Example: UNB+UNOC:3+GLN-SENDER:14+GLN-EMPFAENGER:14+150319:1428+59+++++1'

No = Consecutive segment number
 MaxOcc = Maximum occurrence of the segment/group
 Counter = Counter of segment/group within the standard

St = Status
 EDIFACT: M=Mandatory, C=Conditional
 User specific: R=Required, O=Optional, D=Dependent,
 A=Advised, N=Not used

Segment descriptions

Number	No	Segment	St	MaxRep.	Level	Name
--------	----	---------	----	---------	-------	------

0010	3	UNH	M	1	0	Message Header Segment
------	---	------------	---	---	---	------------------------

Tag	Name	St	Format	Usage / Comments
UNH				
0062	Message Reference Number	M	an..14	In each transmission file, starting with 1, each message is consecutively numbered in ascending order without any gaps. This task is performed by the converter.
S009	MESSAGE IDENTIFICATION	M		
0065	Message Type Identification	M	an..6	Constant value: REMADV Zahlungsavis
0052	Message type version number	M	an..3	Constant value: D Draft Directory (Verzeichnis-Entwurf)
0054	Release number of the message type	M	an..3	Constant value: 96B UN/EDIFACT Draft Directory D.96B
0051	Managing organisation, coded	M	an..2	Constant value: UN Vereinte Nationen UN/ECE/TRADE/WP.4
0057	Application code of the responsible organisation	M	an..6	Constant value: ITEK42 Version 4.2

Description: In the UNH segment, a message is uniquely identified. The EDITEC subset Payment Advice is based on the EDIFACT message type REMADV.

Example: UNH+1+REMADV:D:96B:UN:ITEK42'

No = Consecutive segment number
 MaxOcc = Maximum occurrence of the segment/group
 Counter = Counter of segment/group within the standard

St = Status
 EDIFACT: M=Mandatory, C=Conditional
 User specific: R=Required, O=Optional, D=Dependent,
 A=Advised, N=Not used

Segment descriptions

Number	No	Segment	St	MaxRep.	Level	Name
--------	----	---------	----	---------	-------	------

0020	4	BGM	M	1	0	Start Of The Message
------	---	------------	---	---	---	----------------------

Tag	Name	St	Format	Usage / Comments
BGM				
C002	DOCUMENT/MESSAGE NAME	M		
1001	Document/Message Name, Coded	M	an..3	CONSTANT VALUE: 481 Payment advice
C106	DOCUMENT/MESSAGE IDENTIFICATION	C		
1004	Document/Message Number	M	an..35	Payment advice number assigned by the issuer of the document.
1225	MESSAGE FUNCTION, CODED	C	an..3	The following codes are available: 1 Cancellation 31 Copy 9 Original

Description: In the BGM segment, the use and name of the message are specified.

Example: BGM+481+130319+9'

No = Consecutive segment number
 MaxOcc = Maximum occurrence of the segment/group
 Counter = Counter of segment/group within the standard

St = Status
 EDIFACT: M=Mandatory, C=Conditional
 User specific: R=Required, O=Optional, D=Dependent,
 A=Advised, N=Not used

Segment descriptions

Number	No	Segment	St	MaxRep.	Level	Name
--------	----	---------	----	---------	-------	------

0030	5	DTM	M	1	1	Date/Time of Payment Advice
------	---	------------	---	---	---	-----------------------------

Tag	Name	St	Format	Usage / Comments
DTM				
C507	DATE/TIME/PERIOD DETAILS	M		
2005	Date/Time/Period Details, Qualifiers	M	an..3	Constant value: 137 Document/Message date
2380	Date/Time/Period Details	C	an..35	Payment advice date/Billing period, formatted as shown in Data Element 2379.
2379	Date/Time/Period Details, Format, Qualifier	C	an..3	The following codes are available: 102 Format: YYYYMMDD 711 Format: YYYYMMDD-YYYYMMDD (only if billing period in DE 2005 selected)

Description: In the DTM segment, the date of the payment advice must be transmitted. Additionally, the billing period can be transmitted.

Example: DTM+137:20150319:102'

No = Consecutive segment number
 MaxOcc = Maximum occurrence of the segment/group
 Counter = Counter of segment/group within the standard

St = Status
 EDIFACT: M=Mandatory, C=Conditional
 User specific: R=Required, O=Optional, D=Dependent,
 A=Advised, N=Not used

Segment descriptions

Number	No	Segment	St	MaxRep.	Level	Name
--------	----	---------	----	---------	-------	------

0030	6	DTM	M	1	1	Billing period
------	---	------------	---	---	---	----------------

Tag	Name	St	Format	Usage / Comments
DTM				
C507	DATE/TIME/PERIOD DETAILS	M		
2005	Date/Time/Period Details, Qualifier	M	an..3	The following codes are available: 263 Billing period
2380	Date/Time/Period Details	C	an..35	Payment advice date/Billing period, formatted as shown in Data Element 2379.
2379	Date/Time/Period Details, Format, Qualifier	C	an..3	The following codes are available: 102 Format: YYYYMMDD 711 Format: YYYYMMDD-YYYYMMDD (only if billing period in DE 2005 selected)

Description: In the DTM segment, the date of the payment advice must be transmitted. Additionally, the billing period can be transmitted.

Implementation note: The specification of the billing period is important and required. The billing period should always be provided in the format 711 YYYYMMDD-YYYYMMDD under qualifier 263 within Germany.

Example: DTM+263:20141029:102'

No = Consecutive segment number
 MaxOcc = Maximum occurrence of the segment/group
 Counter = Counter of segment/group within the standard

St = Status
 EDIFACT: M=Mandatory, C=Conditional
 User specific: R=Required, O=Optional, D=Dependent,
 A=Advised, N=Not used

Segment descriptions

Number	No	Segment	St	MaxRep.	Level	Name
--------	----	---------	----	---------	-------	------

0050	7	FII	C	2	1	Financial institution
------	---	------------	---	---	---	------------------------------

Tag	Name	St	Format	Usage / Comments
FII				
3035	PARTICIPANT, QUALIFIER	M	an..3	The following codes are available: PB paying credit institution RB receiving credit institution
C078	ACCOUNT DETAILS	C		
3194	Account number	M	an..35	National account number or IBAN of the payee
3192	Account Holder	M	an..35	
3192	Account Holder	C	an..35	
C088	BANK IDENTIFICATION	C		
3433	Bank, Identification	M	an..11	National bank sort code or BIC code of the payee
1131	Code list, Qualifier	M	an..3	Constant value: 25 Bank identification (sort code)
3055	Managing organisation, coded	M	an..3	Constant value: 5 ISO (International Organization for Standardization)

Description: This segment specifies the accounts of the paying and the receiving financial institutions.

Implementation note: In this segment, the paying and receiving bank must be transmitted using the codes mentioned above.

Example: FII+RB+589900890:Muster:Bank+BLZ:25:5'

No = Consecutive segment number
 MaxOcc = Maximum occurrence of the segment/group
 Counter = Counter of segment/group within the standard

St = Status
 EDIFACT: M=Mandatory, C=Conditional
 User specific: R=Required, O=Optional, D=Dependent,
 A=Advised, N=Not used

Segment descriptions

Number	No	Segment	St	MaxRep.	Level	Name
--------	----	---------	----	---------	-------	------

0060	8	PAI	C	1	0	Payment details
------	---	------------	---	---	---	-----------------

Tag	Name	St	Format	Usage / Comments
PAI				
C534	Payment instruction details	M		
4439		N		Not used in the subset.
4431		N		Not used in the subset.
4461	Payment method, coded	M	an..3	The following codes are available: 20 Cheque 21 Bank bill (finance bill) 31 Direct debit transmission/Bank collection 42 Payment to bank account 70 Bill of exchange drawn by the creditor on the debtor (trade bill)

Description: This segment is used to specify the means of payment.

Implementation note: In this segment, please transfer the payment method or payment channel according to the above-mentioned code list.

Example: PAI+ : : 42 '

No = Consecutive segment number
 MaxOcc = Maximum occurrence of the segment/group
 Counter = Counter of segment/group within the standard

St = Status
 EDIFACT: M=Mandatory, C=Conditional
 User specific: R=Required, O=Optional, D=Dependent,
 A=Advised, N=Not used

Segment descriptions

Number	No	Segment	St	MaxRep.	Level	Name
0090		SG1	C	1	1	Payee
This segment group includes the NAD segment as well as Segment Group 2 and is used to specify the partners involved in the message and their contacts.						
0100	9	NAD	M	1	1	Name and Address

Tag	Name	St	Format	Usage / Comments
NAD				
3035	PARTNER, QUALIFIER	M	an..3	The following codes are available: PE Payee
C082	IDENTIFICATION OF THE PARTNER	C		
3039	Partner identification number, coded	M	an..35	Depending on the qualifier mentioned above, the partner's identification number is provided here.
1131		N		Not used in the subset.
3055	Managing organisation, coded	M	an..3	The following codes are available: 9 GLN (GS1 as the German issuer of GLN numbers) ZZZ bilaterally agreed (customer or supplier numbers)

- Description:** In the NAD segment, details for the identification of the involved partners as well as key address information are transmitted.
- Implementation note:** In cases where in the central settlement business the specification of the buyer necessitates a new transmission file each time, the mention of the buyer should be omitted. The payees or the supplier can then identify the buyer through the invoice number in their IT systems.
- Example:** NAD+PE+GLN-Zahlungsempfänger::9'

No = Consecutive segment number
 MaxOcc = Maximum occurrence of the segment/group
 Counter = Counter of segment/group within the standard

St = Status
 EDIFACT: M=Mandatory, C=Conditional
 User specific: R=Required, O=Optional, D=Dependent,
 A=Advised, N=Not used

Segment descriptions

Number	No	Segment	St	MaxRep.	Level	Name
0110		SG2	C	1	2	CTA-COM
This segment group contains the CTA segment for specifying the contact person and the COM segment for indicating the communication connection with the contact person.						
0120	10	CTA	M	1	2	Communication Partner

Tag	Name	St	Format	Usage / Comments
CTA				
3139		N		Not used in the subset.
C056	DEPARTMENT OR PROCESSOR	M		
3413		N		Not used in the subset.
3412	Department or Processor	M	an..35	Name of the clerk or department.

Description: In the CTA segment, the name of a contact person responsible for the process can be transferred for the partners specified in the NAD segment.

Example: CTA++:Max Mustermann'

No = Consecutive segment number
 MaxOcc = Maximum occurrence of the segment/group
 Counter = Counter of segment/group within the standard

St = Status
 EDIFACT: M=Mandatory, C=Conditional
 User specific: R=Required, O=Optional, D=Dependent,
 A=Advised, N=Not used

Segment descriptions

Number	No	Segment	St	MaxRep.	Level	Name
0110		SG2	C	1	2	CTA-COM
This segment group contains the CTA segment for specifying the contact person and the COM segment for indicating the communication connection with the contact person.						
0130	11	COM	C	3	3	Communication link

Tag	Name	St	Format	Usage / Comments
COM				
C076	COMMUNICATION CONNECTION	M		
3148	Communication number	M	an..512	
3155	Communication channel/service, qualifier	M	an..3	The following Codes are available: EM E-mail FX Fax TE Telephone

Description: A segment for specifying the communication number and type for the contact or department indicated in the CTA segment.

Example: COM+max_mustermann@e_mail.de:EM'

No = Consecutive segment number
 MaxOcc = Maximum occurrence of the segment/group
 Counter = Counter of segment/group within the standard

St = Status
 EDIFACT: M=Mandatory, C=Conditional
 User specific: R=Required, O=Optional, D=Dependent,
 A=Advised, N=Not used

Segment descriptions

Number	No	Segment	St	MaxRep.	Level	Name
0090		SG1	C	1	1	Payer
This segment group includes the NAD segment as well as Segment Group 2 and is used to specify the partners involved in the message and their contacts.						
0100	12	NAD	M	1	1	Name and Address

Tag	Name	St	Format	Usage / Comments
NAD				
3035	PARTNER, QUALIFIER	M	an..3	The following codes are available: PR Payer
C082	IDENTIFICATION OF THE PARTNER	C		
3039	Partner identification number, coded	M	an..35	Depending on the qualifier mentioned above, the partner's identification number is provided here.
1131		N		Not used in the subset.
3055	Managing organisation, coded	M	an..3	The following codes are available: 9 GLN (GS1 as the German issuer of GLN numbers) ZZZ bilaterally agreed (customer or supplier numbers)

Description: In the NAD segment, details for the identification of the involved partners as well as key address information are transmitted.

Implementation note: In cases where in the central settlement business the specification of the buyer necessitates a new transmission file each time, the specification of the buyer should be omitted. The payees or the supplier can then identify the buyer through the invoice number in their IT systems.

Example: NAD+PR+GLN-Zahlender::9'

No = Consecutive segment number
 MaxOcc = Maximum occurrence of the segment/group
 Counter = Counter of segment/group within the standard

St = Status
 EDIFACT: M=Mandatory, C=Conditional
 User specific: R=Required, O=Optional, D=Dependent,
 A=Advised, N=Not used

Segment descriptions

Number	No	Segment	St	MaxRep.	Level	Name
0110		SG2	C	1	2	CTA-COM
This segment group includes the CTA segment for specifying the contact person and the COM segment for indicating the communication connection with the contact person.						
0130	14	COM	C	3	3	Communication link

Tag	Name	St	Format	Usage / Comments
COM				
C076	COMMUNICATION CONNECTION	M		
3148	Communication number	M	an..512	
3155	Communication channel/service, qualifier	M	an..3	The following codes are available: EM E-mail FX Fax TE Telephone

Description: A segment for specifying the communication number and type for the contact or department indicated in the CTA segment.

Example: COM+erika_mustermann@e_mail.de:EM'

No = Consecutive segment number
 MaxOcc = Maximum occurrence of the segment/group
 Counter = Counter of segment/group within the standard

St = Status
 EDIFACT: M=Mandatory, C=Conditional
 User specific: R=Required, O=Optional, D=Dependent,
 A=Advised, N=Not used

Segment descriptions

Number	No	Segment	St	MaxRep.	Level	Name
0090		SG1	C	1	1	Buyer
This segment group includes the NAD segment as well as Segment Group 2 and is used to specify the partners involved in the message and their contacts.						
0100	15	NAD	M	1	1	Name and Address

Tag	Name	St	Format	Usage / Comments
NAD				
3035	PARTNER, QUALIFIER	M	an..3	The code BY (for buyer) is used exclusively in central settlement business. Explanation: Code BY is used to identify the buyer of goods and services. The following codes are available: BY Buyer *
C082	IDENTIFICATION OF THE PARTNER	C		
3039	Partner identification number, coded	M	an..35	Depending on the qualifier mentioned above, the partner's identification number is provided here.
1131		N		Not used in the subset.
3055	Managing organisation, coded	M	an..3	The following codes are available: 9 GLN (GS1 as the German issuer of GLN numbers) ZZZ bilaterally agreed (customer or supplier numbers)

Description: In the NAD segment, details for the identification of the involved partners as well as key address information are transmitted.

Implementation note: In cases where in the central settlement business the specification of the buyer necessitates a new transmission file each time, the specification of the buyer should be omitted. The payees or the supplier can then identify the buyer through the invoice number in their IT systems.

Example: NAD+BY+GLN-Käufer::9'

No = Consecutive segment number
 MaxOcc = Maximum occurrence of the segment/group
 Counter = Counter of segment/group within the standard

St = Status
 EDIFACT: M=Mandatory, C=Conditional
 User specific: R=Required, O=Optional, D=Dependent, A=Advised, N=Not used

Segment descriptions

Number	No	Segment	St	MaxRep.	Level	Name
0110		SG2	C	1	2	CTA-COM
This segment group contains the CTA segment for specifying the contact person and the COM segment for specifying the communication connection with the contact person.						
0120	16	CTA	M	1	2	Trading Partner

Tag	Name	St	Format	Usage / Comments
CTA				
3139		N		Not used in the subset.
C056	DEPARTMENT OR PROCESSOR	M		
3413		N		Not used in the subset.
3412	Department or Processor	M	an..35	Name of the clerk or department.

Description: In the CTA segment, the name of a contact person responsible for the process can be transferred for the partners specified in the NAD segment.

Example: CTA++:Erika Mustermann'

No = Consecutive segment number
 MaxOcc = Maximum occurrence of the segment/group
 Counter = Counter of segment/group within the standard

St = Status
 EDIFACT: M=Mandatory, C=Conditional
 User specific: R=Required, O=Optional, D=Dependent,
 A=Advised, N=Not used

Segment descriptions

Number	No	Segment	St	MaxRep.	Level	Name
0110		SG2	C	1	2	CTA-COM
This segment group contains the CTA segment for specifying the contact person and the COM segment for specifying the communication connection with the contact person.						
0130	17	COM	C	3	3	Communication link

Tag	Name	St	Format	Usage / Comments
COM				
C076	COMMUNICATION CONNECTION	M		
3148	Communication number	M	an..512	
3155	Communication channel/service, qualifier	M	an..3	The following codes are available: EM E-Mail FX Fax TE Telephone

Description: A segment for specifying the communication number and type for the contact or department indicated in the CTA segment.

Example: COM+erika_mustermann@e_mail.de:EM'

No = Consecutive segment number
 MaxOcc = Maximum occurrence of the segment/group
 Counter = Counter of segment/group within the standard

St = Status
 EDIFACT: M=Mandatory, C=Conditional
 User specific: R=Required, O=Optional, D=Dependent,
 A=Advised, N=Not used

Segment descriptions

Number	No	Segment	St	MaxRep.	Level	Name
0090		SG1	C	1	1	Supplier
This segment group includes the NAD segment as well as Segment Group 2 and is used to specify the partners involved in the message and their contacts.						
0100	18	NAD	M	1	1	Name and Address

Tag	Name	St	Format	Usage / Comments
NAD				
3035	PARTNER, QUALIFIER	M	an..3	The code SU (for supplier) is used only in central settlement business. The following codes are available: SU Supplier *
C082	IDENTIFICATION OF THE PARTNER	C		
3039	Partner identification number, coded	M	an..35	Depending on the qualifier mentioned above, the partner's identification number is provided here.
1131		N		Not used in the subset.
3055	Managing organisation, coded	M	an..3	The following codes are available: 9 GLN (GS1 as the German issuer of GLN numbers) ZZZ bilaterally agreed (customer or supplier numbers)

Description: In the NAD segment, details for the identification of the involved partners as well as key address information are transmitted.

Implementation note: In cases where central settlement transactions require a new transmission file for each buyer's details, it is advisable to omit the buyer's details. The payees or the supplier can then identify the buyer through the invoice number in their IT systems.

Example: NAD+SU+GLN-Empfaenger : : 9'

No = Consecutive segment number
 MaxOcc = Maximum occurrence of the segment/group
 Counter = Counter of segment/group within the standard

St = Status
 EDIFACT: M=Mandatory, C=Conditional
 User specific: R=Required, O=Optional, D=Dependent,
 A=Advised, N=Not used

Segment descriptions

Number	No	Segment	St	MaxRep.	Level	Name
0110		SG2	C	1	2	CTA-COM
This segment group includes the CTA segment for specifying the contact person and the COM segment for indicating the communication connection with the contact person.						
0120	19	CTA	M	1	2	Communication Partner

Tag	Name	St	Format	Usage / Comments
CTA				
3139		N		Not used in the subset.
C056	DEPARTMENT OR PROCESSOR	M		
3413		N		Not used in the subset.
3412	Department or Processor	M	an..35	Name of the clerk or department.

Description: In the CTA segment, the name of a contact person responsible for the process can be transferred for the partners specified in the NAD segment.

Example: CTA++:Tim Mustermann'

No = Consecutive segment number
 MaxOcc = Maximum occurrence of the segment/group
 Counter = Counter of segment/group within the standard

St = Status
 EDIFACT: M=Mandatory, C=Conditional
 User specific: R=Required, O=Optional, D=Dependent,
 A=Advised, N=Not used

Segment descriptions

Number	No	Segment	St	MaxRep.	Level	Name
0110		SG2	C	1	2	CTA-COM
This segment group includes the CTA segment for specifying the contact person and the COM segment for indicating the communication connection with the contact person.						
0130	20	COM	C	3	3	Communication link

Tag	Name	St	Format	Usage / Comments
COM				
C076	COMMUNICATION CONNECTION	M		
3148	Communication number	M	an..512	
3155	Communication channel/service, qualifier	M	an..3	The following codes are available: EM E-Mail FX Fax TE Telephone

Description: A segment for specifying the communication number and type for the contact or department indicated in the CTA segment.

Example: COM+tim_mustermann@e_mail.de:EM'

No = Consecutive segment number
 MaxOcc = Maximum occurrence of the segment/group
 Counter = Counter of segment/group within the standard

St = Status
 EDIFACT: M=Mandatory, C=Conditional
 User specific: R=Required, O=Optional, D=Dependent,
 A=Advised, N=Not used

Segment descriptions

Number	No	Segment	St	MaxRep.	Level	Name
0140		SG3	C	1	1	CUX
This segment group contains the CUX segment and is used to convey the base currency for the entire payment advice.						
0150	21	CUX	M	1	1	Currency Information

Tag	Name	St	Format	Usage / Comments
CUX				
C504	CURRENCY DETAILS	C		
6347	Currency Information, Qualifier	M	an..3	Constant value: 2 Base currency
6345	Currency, coded	C	an..3	The main currency codes according to ISO 4217: CAD Canadian Dollars CHF Swiss Franc DKK Danish Kroner EUR Euro GBP British Pounds NOK Norwegian Kroner PLN Polish Zloty SEK Swedish Kronor USD US Dollar

Description: In the CUX segment, information about currencies is transmitted.

Example: CUX+2 : EUR'

No = Consecutive segment number
 MaxOcc = Maximum occurrence of the segment/group
 Counter = Counter of segment/group within the standard

St = Status
 EDIFACT: M=Mandatory, C=Conditional
 User specific: R=Required, O=Optional, D=Dependent,
 A=Advised, N=Not used

Segment descriptions

Number	No	Segment	St	MaxRep.	Level	Name
--------	----	---------	----	---------	-------	------

0170 **SG4** C 9999 1 **DOC-MOA-DTM-RFF-SG6**

The segment group contains details of the documents that have been transmitted either in printed form or electronically. The documents should be understood in accordance with the message description and may also identify subsequent processing.

0190 23 **MOA** M 4 2 **Monetary amount**

Tag	Name	St	Format	Usage / Comments
MOA				
C516	MONETARY AMOUNT	M		
5025	Monetary amount type, qualifier	M	an..3	The code 265 for commission amount (including taxes) is used only in central settlement business. The following codes are available: 143 Transfer amount 265 Commission Amount (Delcredere Commissions)* 52 Deduction (discount) 77 Invoice amount
5004	Monetary amount	C	n..18	

Description: This segment is used to specify an amount of money.

Example: MOA+52:39,58'

No = Consecutive segment number
 MaxOcc = Maximum occurrence of the segment/group
 Counter = Counter of segment/group within the standard

St = Status
 EDIFACT: M=Mandatory, C=Conditional
 User specific: R=Required, O=Optional, D=Dependent,
 A=Advised, N=Not used

Segment descriptions

Number	No	Segment	St	MaxRep.	Level	Name
0170		SG4	C	9999	1	DOC-MOA-DTM-RFF-SG6
The segment group contains details of the documents that have been transmitted either in printed form or electronically. The documents should be understood in accordance with the message description and may also identify subsequent processing.						
0200	24	DTM	C	1	2	Date/Time/Period Details

Tag	Name	St	Format	Usage / Comments
DTM				
C507	DATE/TIME/PERIOD DETAILS	M		
2005	Date/Time/Period Details, Qualifiers	M	an..3	Constant value: 137 Document / message date
2380	Date/Time/Period Details	C	an..35	Date formatted as shown in data element 2379.
2379	Date/Time/Period Details, Format, Qualifier	C	an..3	Constant value: 102 Format: YYYYMMDD

Description: Date/time of the document specified in the DOC segment.

Example: DTM+137:20150204:102'

No = Consecutive segment number
 MaxOcc = Maximum occurrence of the segment/group
 Counter = Counter of segment/group within the standard

St = Status
 EDIFACT: M=Mandatory, C=Conditional
 User specific: R=Required, O=Optional, D=Dependent,
 A=Advised, N=Not used

Segment descriptions

Number	No	Segment	St	MaxRep.	Level	Name
0260		SG6	C	1	2	AJT-MOA-RFF-FTX
0270	26	AJT	M	1	2	Indication of the reason for a change

Tag	Name	St Format	Usage / Comments
AJT			
4465	Reason for change, coded	M an..3	<p>When corrections are made due to national tax practices, appropriate code values must be assigned by the national numbering organization.</p> <p>The following codes are available:</p> <ul style="list-style-type: none"> 1 Agreed regulation 16 Goods partially returned 16E Discount 17 Transport damage 19 Trade discount 20 Discount for late delivery 3 Damaged goods 32 Goods not delivered 4 Partial delivery 5 Price questionable 57 Price change 9 Invoice error ZZZ Bilaterally agreed

Description: This segment is used to specify the reason for a correction to the current document. The corrections apply to the entire document referenced in the DOC segment.

Example: AJT+1 '

No = Consecutive segment number
 MaxOcc = Maximum occurrence of the segment/group
 Counter = Counter of segment/group within the standard

St = Status
 EDIFACT: M=Mandatory, C=Conditional
 User specific: R=Required, O=Optional, D=Dependent,
 A=Advised, N=Not used

Segment descriptions

Number	No	Segment	St	MaxRep.	Level	Name
0260		SG6	C	1	2	AJT-MOA-RFF-FTX
0280	27	MOA	C	1	3	Monetary amount

Tag	Name	St	Format	Usage / Comments
MOA				
C516	MONETARY AMOUNT		M	
5025	Type of montary amount, qualifier		M an..3	The following codes are available: 5 Corrected amount
5004	Monetary amount		C n..18	

Description: This segment is used to specify the corrected amount of money.

Example: MOA+5 : 9'

No = Consecutive segment number
 MaxOcc = Maximum occurrence of the segment/group
 Counter = Counter of segment/group within the standard

St = Status
 EDIFACT: M=Mandatory, C=Conditional
 User specific: R=Required, O=Optional, D=Dependent,
 A=Advised, N=Not used

Segment descriptions

Number	No	Segment	St	MaxRep.	Level	Name
0260		SG6	C	1	2	AJT-MOA-RFF-FTX
0290	28	RFF	C	1	3	Reference Details

Tag	Name	St	Format	Usage / Comments
RFF				
C506	REFERENCE DETAILS	M		
1153	Reference, Qualifier	M	an..3	The following code is available: ON Order/Purchase Number (Buyer) ON Order number (supplier) PL Price list number POR Order response number PP Order amendment number
1154	Reference Number	C	an..35	

Description: In the RFF segment, references to the corrected amounts can be specified.

Example: RFF+ON:1'

No = Consecutive segment number
 MaxOcc = Maximum occurrence of the segment/group
 Counter = Counter of segment/group within the standard

St = Status
 EDIFACT: M=Mandatory, C=Conditional
 User specific: R=Required, O=Optional, D=Dependent,
 A=Advised, N=Not used

Segment descriptions

Number	No	Segment	St	MaxRep.	Level	Name
0260		SG6	C	1	2	AJT-MOA-RFF-FTX
0300	29	FTX	C	10	3	Free Text

Tag	Name	St	Format	Usage / Comments
FTX				
4451	TEXT, QUALIFIER	M	an..3	Constant value: AAI General Information
4453		N		Not used in the subset.
C107		N		
4441		N		Not used in the subset.
C108	FREE TEXT	C		
4440	Free Text	M	an..70	
4440	Free Text	C	an..70	
4440	Free Text	C	an..70	
4440	Free Text	C	an..70	
4440	Free Text	C	an..70	

Description: In this segment, additional information related to the payment advice, such as deduction details, is transmitted.

Example: FTX+AAI+++Freitext:Freitext:Freitext:Freitext:Freitext '

No = Consecutive segment number
 MaxOcc = Maximum occurrence of the segment/group
 Counter = Counter of segment/group within the standard

St = Status
 EDIFACT: M=Mandatory, C=Conditional
 User specific: R=Required, O=Optional, D=Dependent,
 A=Advised, N=Not used

Segment descriptions

Number	No	Segment	St	MaxRep.	Level	Name
--------	----	---------	----	---------	-------	------

0470	30	UNS	M	1	0	Section Control Segment
------	----	------------	---	---	---	-------------------------

Tag	Name	St Format	Usage / Comments
UNS			

Description: The UNS segment is a service segment and marks the separation between the line item and totals sections.

Example: UNS

No = Consecutive segment number
 MaxOcc = Maximum occurrence of the segment/group
 Counter = Counter of segment/group within the standard

St = Status
 EDIFACT: M=Mandatory, C=Conditional
 User specific: R=Required, O=Optional, D=Dependent,
 A=Advised, N=Not used

Segment descriptions

Number	No	Segment	St	MaxRep.	Level	Name
0480	31	MOA	M	1	1	Monetary amount

Tag	Name	St Format	Usage / Comments
MOA			
C516	AMOUNT OF MONEY	M	
5025	Monetary amount type, qualifier	M an..3	The following codes are available: 128 Total amount
5004	Monetary amount	C n..18	

Description: This segment is used to specify a monetary amount.

Example: MOA+128:1180'

No = Consecutive segment number
 MaxOcc = Maximum occurrence of the segment/group
 Counter = Counter of segment/group within the standard

St = Status
 EDIFACT: M=Mandatory, C=Conditional
 User specific: R=Required, O=Optional, D=Dependent,
 A=Advised, N=Not used

Segment descriptions

Number	No	Segment	St	MaxRep.	Level	Name
0490	32	UNT	M	1	0	Message End Segment

Tag	Name	St Format	Usage / Comments
UNT			

Description: In the UNT segment, the number of segments and a message reference number are transmitted for plausibility checks.

Example: UNT

No = Consecutive segment number
 MaxOcc = Maximum occurrence of the segment/group
 Counter = Counter of segment/group within the standard

St = Status
 EDIFACT: M=Mandatory, C=Conditional
 User specific: R=Required, O=Optional, D=Dependent,
 A=Advised, N=Not used

Segment descriptions

Number	No	Segment	St	MaxRep.	Level	Name
0000	33	UNZ	M	1	0	Data Segment End

Tag	Name	St	Format	Usage / Comments
UNZ				

Description: In the UNZ segment, a data exchange counter and a data exchange reference can be transmitted.

Example: UNZ

No = Consecutive segment number
 MaxOcc = Maximum occurrence of the segment/group
 Counter = Counter of segment/group within the standard

St = Status
 EDIFACT: M=Mandatory, C=Conditional
 User specific: R=Required, O=Optional, D=Dependent,
 A=Advised, N=Not used

Example

No	Desc	Example
01	UNA	UNA:+,?'
02	UNB	UNB+UNOC:3+GLN-SENDER:14+GLN-EMPFAENGER:14+150319:1428+59+++++1'
03	UNH	UNH+1+REMADV:D:96B:UN:ITEK42'
04	BGM	BGM+481+130319+9'
05	DTM	DTM+137:20150319:102'
06	DTM	DTM+263:20141029:102'
07	FII	FII+RB+589900890:Muster:Bank+BLZ:25:5'
08	PAI	PAI+:42'
	SG1	
09	NAD	NAD+PE+GLN-Zahlungsempfänger::9'
	SG2	
10	CTA	CTA++:Max Mustermann'
11	COM	COM+max_mustermann@e_mail.de:EM'
	SG1	
12	NAD	NAD+PR+GLN-Zahlender::9'
	SG2	
13	CTA	CTA++:Erika Mustermann'
14	COM	COM+erika_mustermann@e_mail.de:EM'
	SG1	
15	NAD	NAD+BY+GLN-Käufer::9'
	SG2	
16	CTA	CTA++:Erika Mustermann'
17	COM	COM+erika_mustermann@e_mail.de:EM'
	SG1	
18	NAD	NAD+SU+GLN-Empfaenger::9'
	SG2	
19	CTA	CTA++:Tim Mustermann'
20	COM	COM+tim_mustermann@e_mail.de:EM'
	SG3	
21	CUX	CUX+2:EUR'
	SG4	
22	DOC	DOC+380+RE15405998790'
23	MOA	MOA+52:39,58'
24	DTM	DTM+137:20150204:102'
25	RFF	RFF+API:1'
	SG6	
26	AJT	AJT+1'
27	MOA	MOA+5:9'
28	RFF	RFF+ON:1'
29	FTX	FTX+AAI+++Freitext:Freitext:Freitext:Freitext:Freitext'
30	UNS	UNS
31	MOA	MOA+128:1180'
32	UNT	UNT
33	UNZ	UNZ

No = Consecutive segment number in the guide
 Desc = Object identifier